

Regenerating local water cycles to benefit nature and communities

While climate change, drought and water stress are global issues, solutions must be local and holistic

We are working beyond our factories on tailored projects and partnerships that protect and retain water, respecting the differences of each watershed

Why watersheds matter

Watersheds refer to the area of land from which all surface run-off flows through a sequence of streams, rivers, aquifers and lakes into the sea or another outlet. They are essential to communities, agriculture, industry and biodiversity



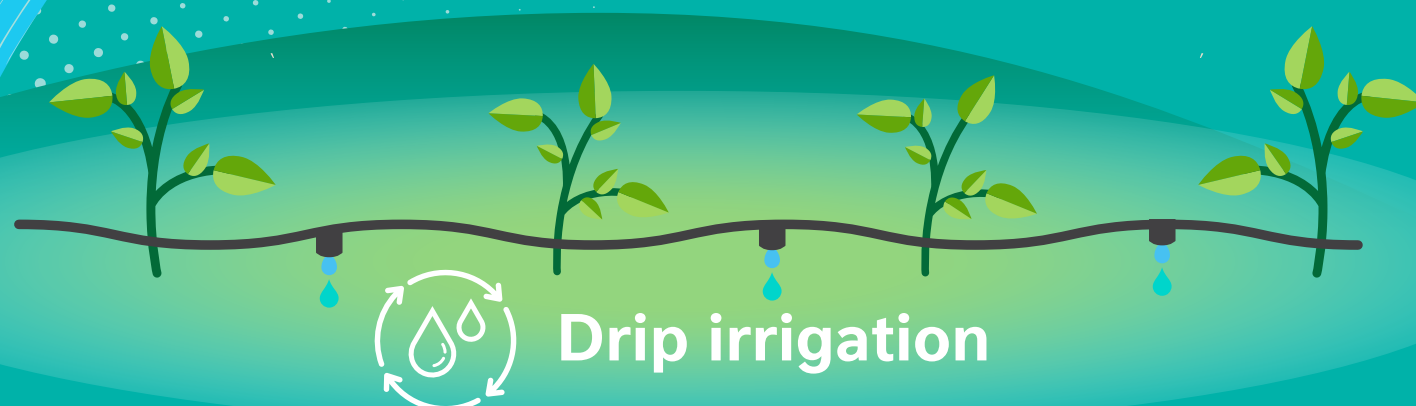
Water infrastructure projects

Our projects will help solve shared water challenges for generations to come and enable local watersheds to capture as much water as is used in Nestlé's bottling operations



WATER QUANTITY

By the end of 2025, projects will be in place at all Nestlé Waters sites, focusing on **WATER QUANTITY, WATER QUALITY AND BIODIVERSITY**



Drip irrigation



Cleaning up canals



Reforestation

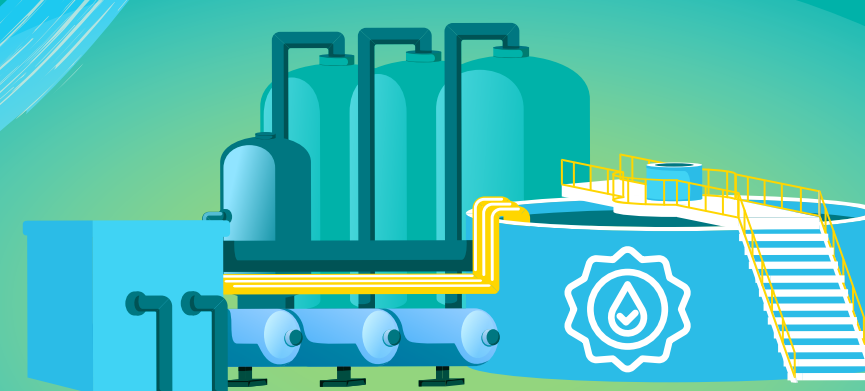
Restoring aquatic ecosystems



WATER QUALITY



Restoring canals



Waste water management



Education on water protection



BIODIVERSITY

Our pledge is to lead the regeneration of local water cycles everywhere we bottle water

8 million m³ volumetric water benefit* delivered by end of 2024

*retained and protected in the watersheds

All our water sites will be certified by the leading global **ALLIANCE FOR WATER STEWARDSHIP** by the end of 2025



Nestlé Good food, Good life