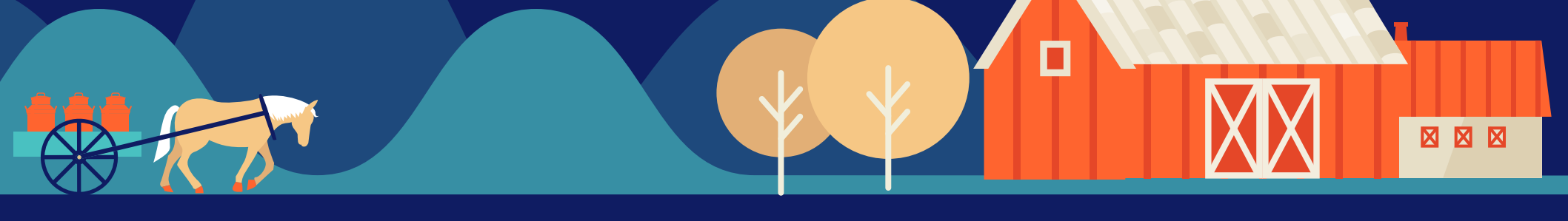


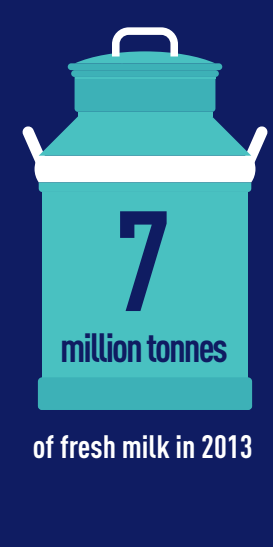


Milk is one of our most important raw materials

Founded in **1866**
in Switzerland Nestlé grew from two small companies producing milk-based products.



We are now one of the **largest milk companies in the world**

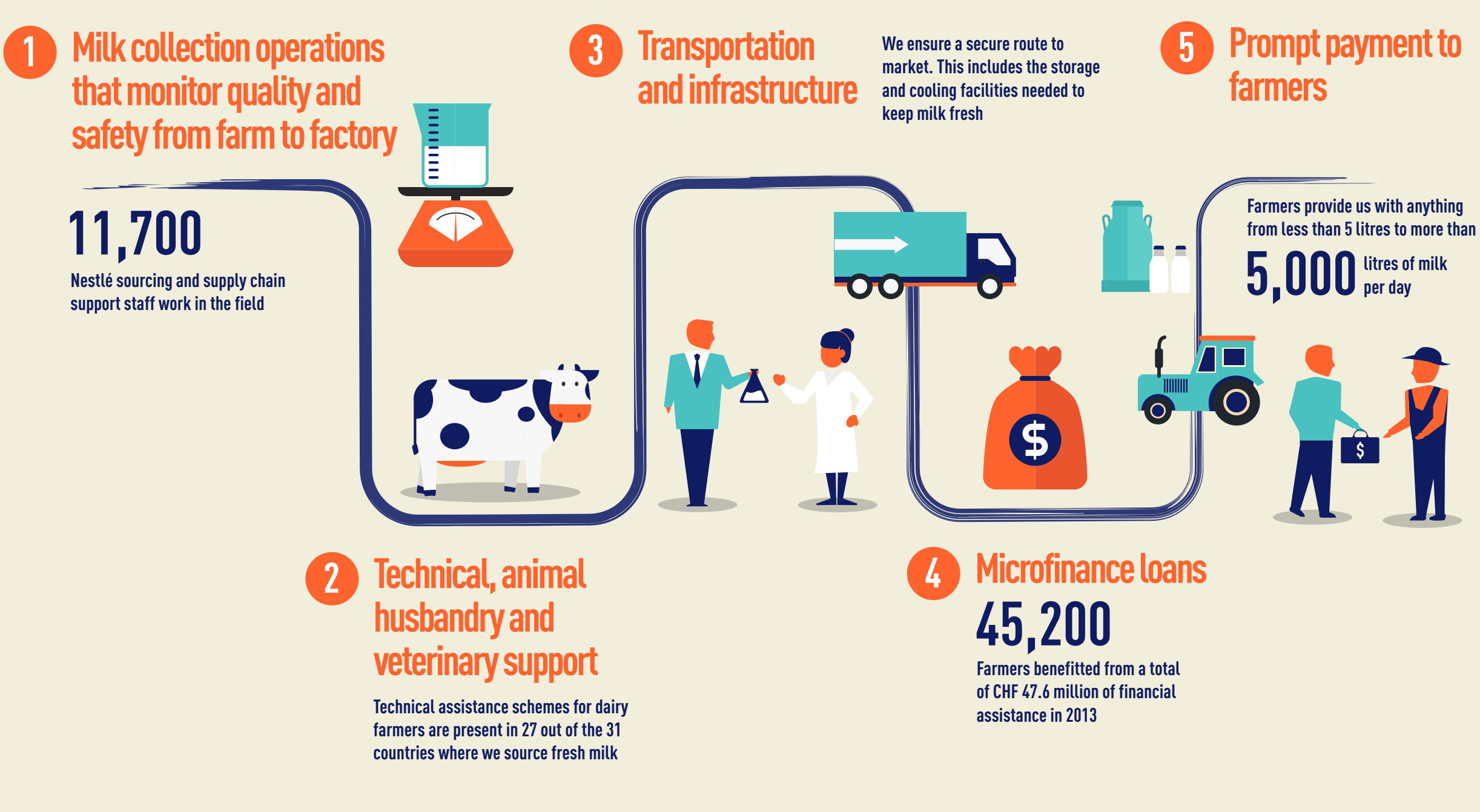


We work with about **413,500** dairy farmers worldwide

We buy milk from more than **30** countries in the world

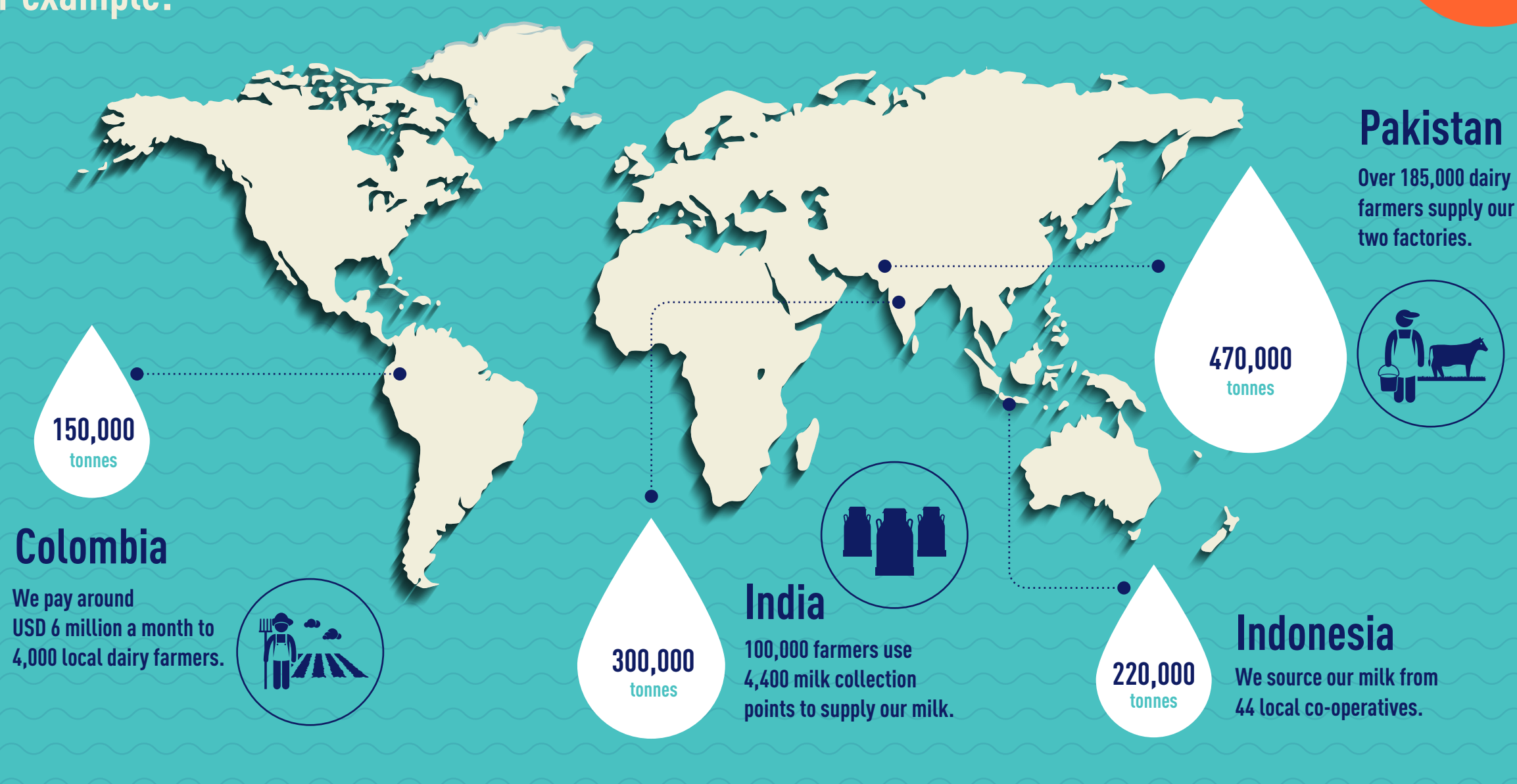
Our fresh milk is collected using our milk district model

First used in the 1870s in Switzerland, this involves the provision of:



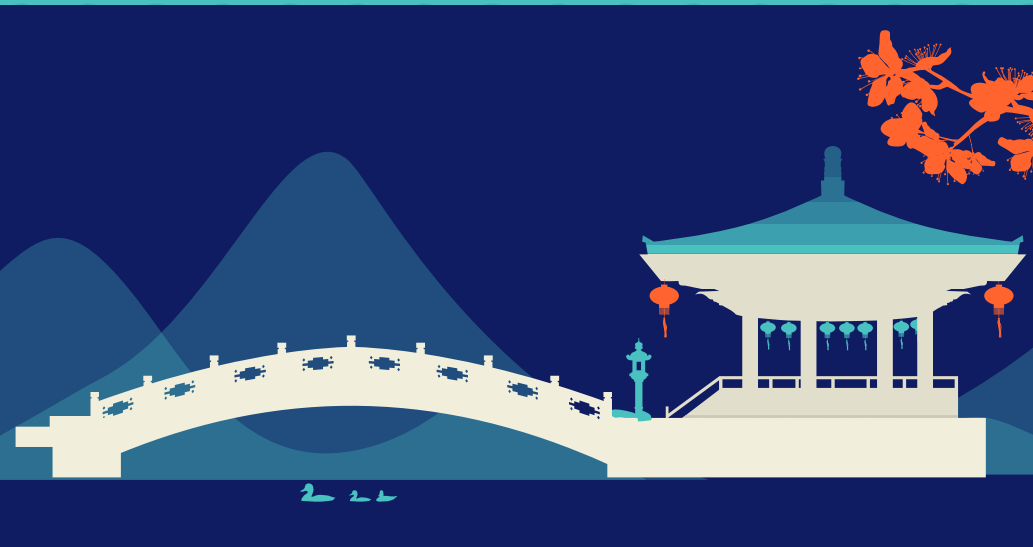
We have set up milk districts all over the world
For example:

milk supplied in 2013



The work goes on

We have just opened a new dairy farming institute in Shuangcheng, China. It is the latest step in our efforts to foster better agricultural practices in the region, which began when we first built a factory there in 1987.



At the institute farmers will be able to:

